

ELF STOCKING PATTERN

BOOT PART 1

PATTERN INSTRUCTIONS:

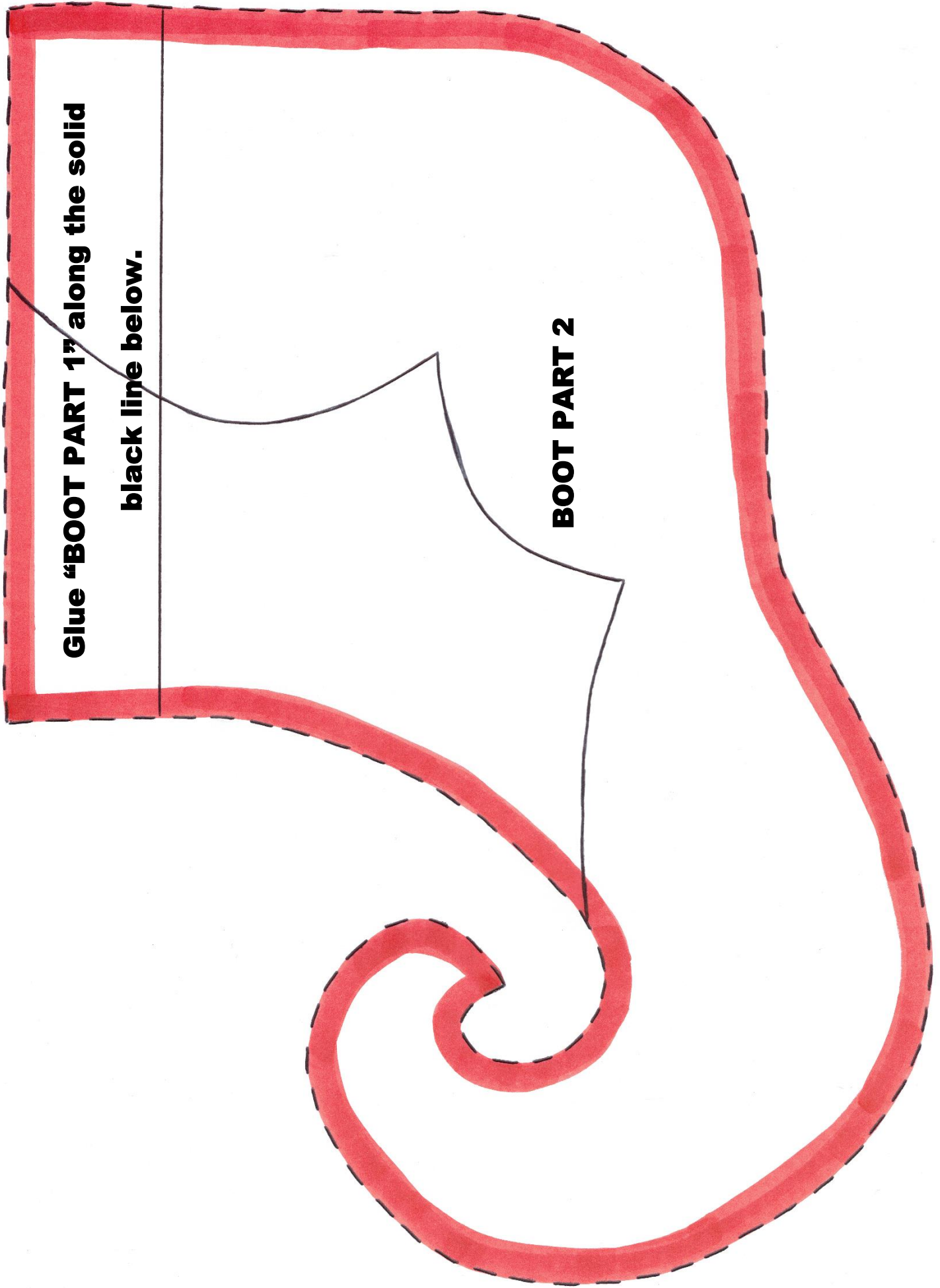
Cut along black dashed line.

**Glue "BOOT PART 1" to "BOOT PART 2"
in marked area making one whole boot.**

Cut X2 of whole boot from green felt.



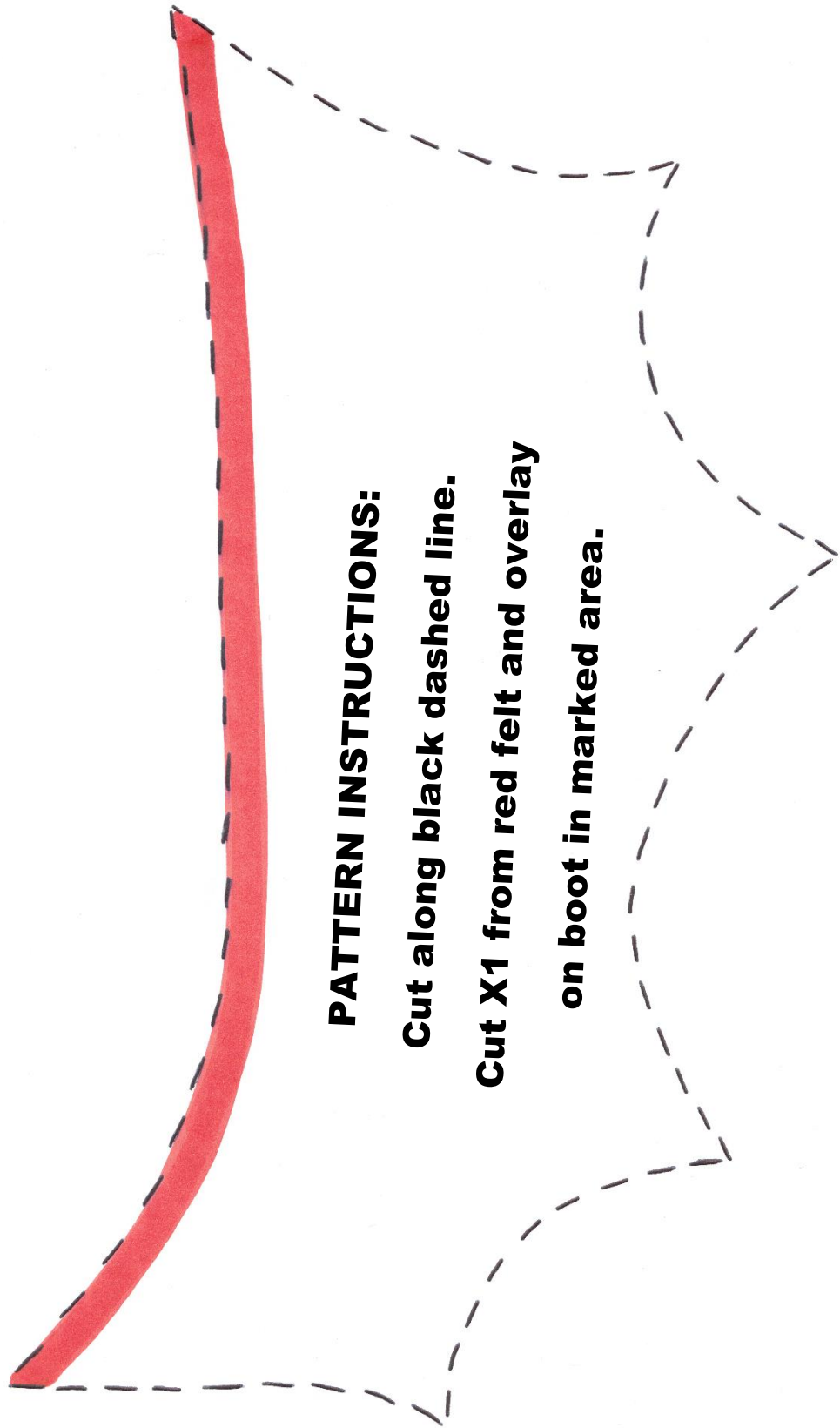
**Glue "BOOT PART 2" along the solid
black line above.**



Glue "BOOT PART 1" along the solid

black line below.

BOOT PART 2



PATTERN INSTRUCTIONS:

Cut along black dashed line.

**Cut X1 from red felt and overlay
on boot in marked area.**